

Community Views

Have your say!

Parish Councils are looking to encourage Residents, Social Groups, Organisations, and Local Businesses to voice their views and help us to:

- Develop a locally focused community or neighbourhood plan
- That make life better for our residents

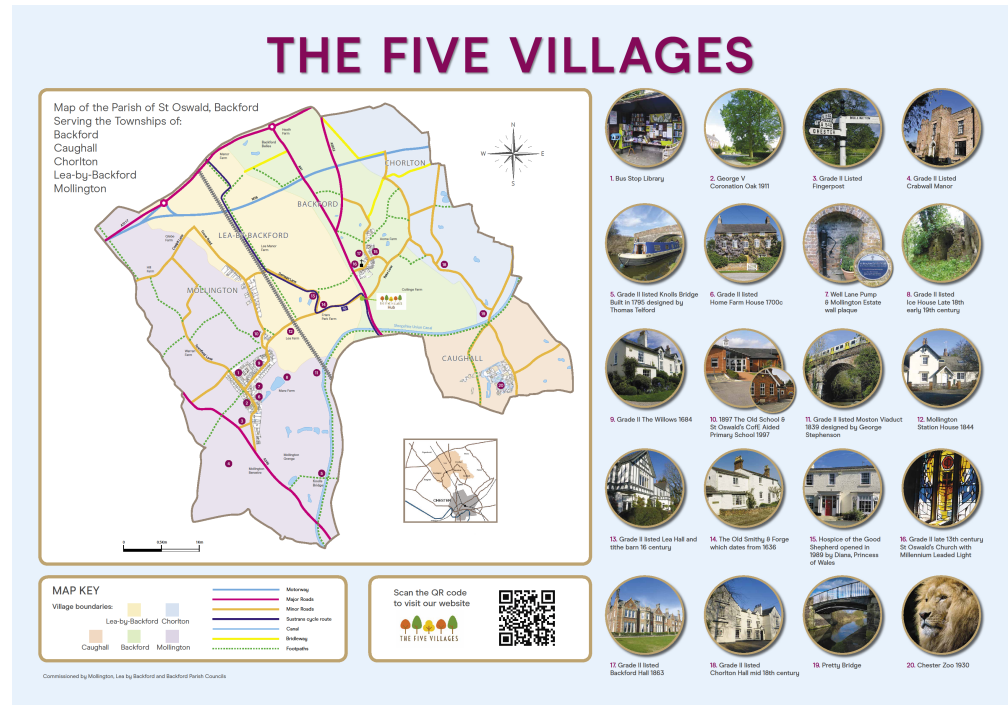


ENGAGEMENT

Our three Civil Parish Councils of Mollington, Lea by Backford and Backford are responsible for working with the residents to help facilitate the development of beneficial community schemes

The 5 villages represented are:-

- Mollington
- Lea by Backford
- Backford
- Chorlton
- Caughall



Community views

Better together

Individual groups had been working in isolation but recent events such as the rebuilding of the village hall, the threat of potential development on what is the former golf course and the Covid 19 pandemic have meant that things are changing in the way the three Parish Councils and residents support each other.

Do you have any views that you want to take forward? Have you a network of friends that could help? Do you need the support of the Council?



Parents in Action

- Parents from the three Parishes run the very successful Toddler Group, (to include Preschool).
- Events on the school field and in the village hall are organised by local families.



Societies

- An active history society has, for many years, gathered information about our heritage for fellow history enthusiasts and interested residents.
- Preserving the past for our pleasure is seen as an important issue by many of our local residents



Nature Lovers

Over recent years, Backford residents have completed a Tree Survey and similar work by residents and the council in Mollington and Lea by Backford has just begun.



Maintaining and Creating Cycle and Walking paths

The Shropshire Union Canal runs through all of our villages and is enveloped in local history.

Is there a need for more cycling and walking routes so that we can more easily access this resource?



Village Hall Development Team

A Village Hall in any village is arguably a 'Hub' of any community, along with its Church and School.

A team of committed local residents have set to, over the last few years, in fundraising and securing a significant amount from the Big Lottery to rebuild our village hall.

This work is currently on going and the three Parish Councils have supported this on your behalf.

Watch this space



Something for All

Prior to COVID 19, the village hall provided a venue for many social, educational and community arts events.

- Rural Touring Theatre
- Flower arranging demonstrations
- Toddler group
- U3A
- Brownies
- Ballet classes for young and adult
- Exercise and yoga classes
- Bereavement Group



It is our **ASPIRATION** to do this again
Working **together** to make life better for our residents

The Parish Councils Working Together

In the past year, the three Parish Councils collaborated to deliver:-

- Heritage Panels for display in the villages
- Support for the Village Hall rebuild project
- Jointly commissioned new Parish Council websites with shared content to cut down on costs and provide continuity.
- Acted on requests from residents to reduce traffic speeds
- Worked with CWAC to ensure highways and accesses remain safe for local residents



Working Together to Make Life Better for Our Residents

Place of Worship

The Church of St Oswald's Backford

- Are there needs that you feel the Church can meet?
- Are you a member of the church community?



Good Local Education

- St Oswald's Primary School Mollington
- How can we improve links with the school?

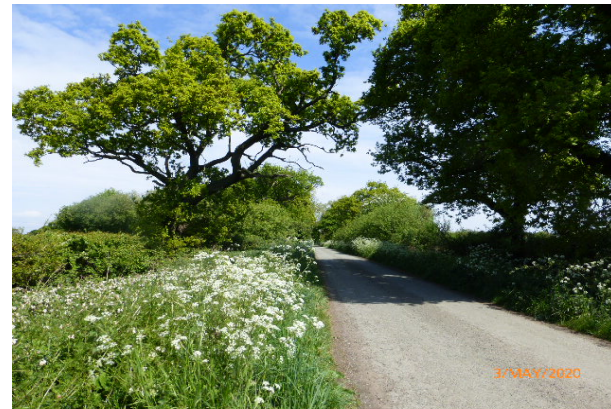


Protecting our Future Heritage and Supporting Our Farmers

The farming land around us provides a beautiful environment and helps us maintain our Green Belt and rural aspect.

Birds, insects, hedgerows and trees are a valuable resource and help us to maintain our well being.

Our Farmers ask us all to help them to continue this great work by nurturing our countryside.



Sharing a Moment on the Village Green

Did you know the
boundary of Mollington
and Lea by Backford is held
within the Village Green?

It's a lovely place to meet
but could the benches do
with a bit of loving care!



Supporting Good Causes

Our local hospice **The Hospice of the Good Shepherd**

The Hospice is independently funded to care for those in the later stages of life or living with a life limiting disease. We are lucky to have one in our local community but it needs our support.

Do you visit its coffee shop?
Would you like to volunteer?



An International
recognised society in our
Ward!

Chester Zoo

Caughall

Are you a
member?

Could we develop
greater links?



Rewilding and Leisure Chester Country Park and the former golf course

Do you want to have your say over the development of this site?

Is it worth protecting as a re-wilded area?

How much would you like to see a cycle and walking route through the course and on to Chester?



Our Hotels and Care Homes

Crabwall Manor and the
Mollington Banastre
The Oaks Care Home and
Crabwall Care Home.

Could we form greater
links for the benefit of
residents?



Local Independent Businesses

There are 100 or so local independent businesses in the 3 Parishes and nearby Saughall

Do you want to know more about local businesses?

How can we support local businesses and home working?

Is Hyperfast Broadband of interest to you?



What matters to you?

Street lighting?

We live in a rural neighbourhood, would more lighting spoil that rural feel or are there roads that would benefit from lighting to make it safer from our residents?

How can we address this issue?



How do we want to see developments?

The CWaC Local Plan Policy STRAT 9 Greenbelt and Countryside, presently protects us.

Essentially, now that Local Plan (two) has been adopted (July 2019), residential development in villages like Mollington no longer allows infill.

But is this CW&C Local Plan protection sufficient?

Do we want to go further?



Do we need a Play Park?

Are outdoor community spaces becoming more important to residents than they have been in the past?

We have no community land on which to build a play park.

Do we need to address this?

If so, how can we address this?



Do we need a community coffee shop?

Social isolation can be an issue for young mums at home and for the elderly.

Would Home Workers like somewhere to meet?

What about teenagers?

Is it a problem?

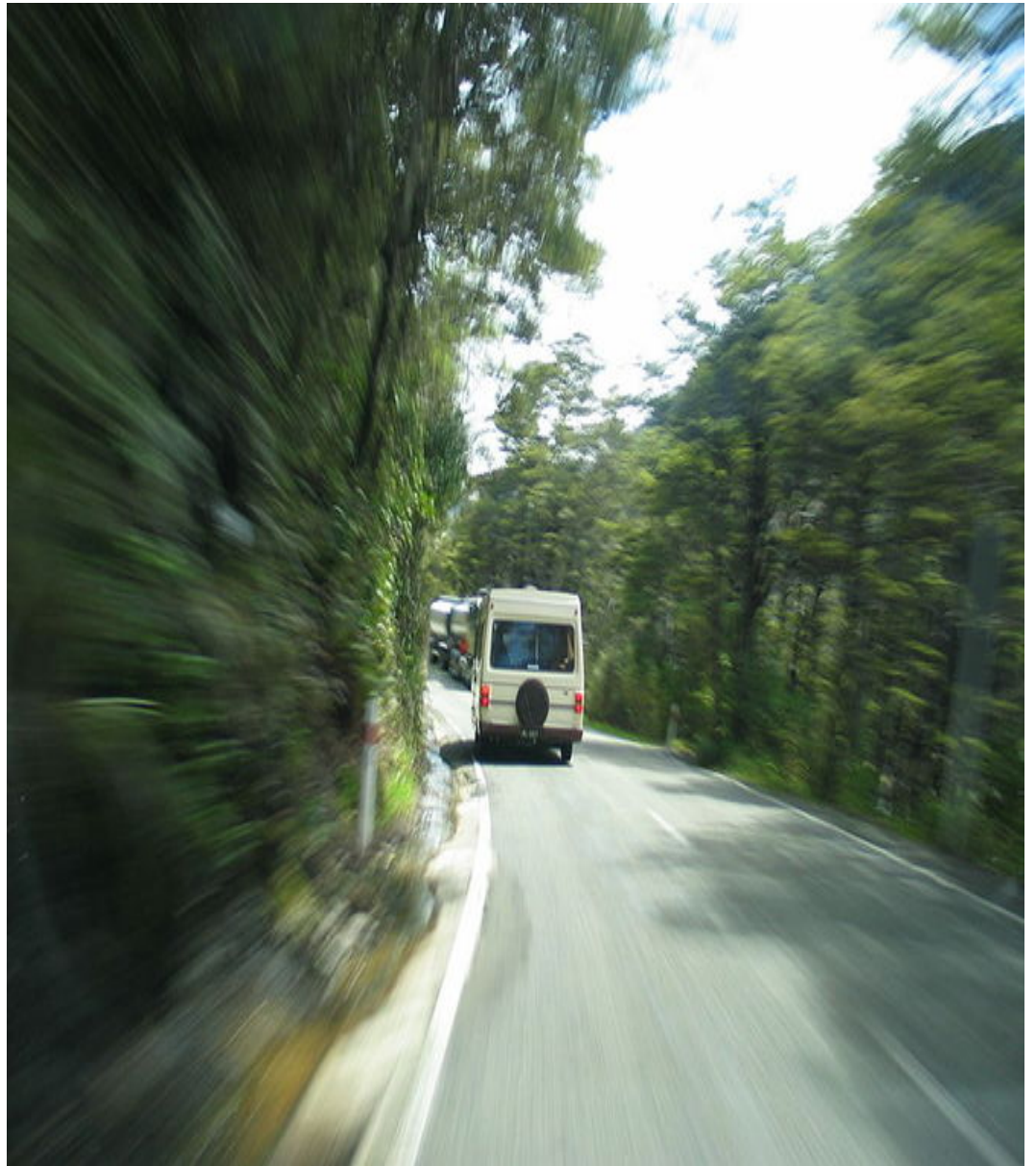


Speed Limits

Are our roads safe enough?

Many residents enjoy walking our rural roads but it is ironic that the speed limits on these unrestricted roads is 60 mph while the main Parkgate road is 50 mph.

Does this issue need to be addressed?



What is Important to You and Your Family?

YOUR VIEWS ARE IMPORTANT TO US

We want to hear from you, so that we can really understand how you would like our community to develop in the future.

We would like your help in delivering a plan for the community.



Your thoughts and views will influence our plans and help us to set a precept that will enable us to fund community projects and to set our goals for the future.

It may even lead to a formal Community or Neighbourhood plan. To understand more read on.

- **What is a Community Plan.**
- A Community Plan is a non statutory document that sets out the what, when and how things are done. It has no legal status.

- What is a **Neighbourhood Plan**?
- It is a statutory document that details how a community wants to develop over time and must be taken into consideration by CW&C when considering new developments.
- It is essentially a planning tool.
- A neighbourhood plan enables a community who care and value their surroundings to set planning guidelines for their area that must be taken into consideration by the local authority when considering new developments.
- Neighbourhood plans involve a lot of work and can take years to develop. They are resource and time heavy. We would need substantial engagement from the community and a great deal of expertise and help to achieve this.

- What is the advantage of a Neighbourhood plan?
- A neighbourhood plan enables a community who care and value their surroundings to set planning guidelines for their area that must be taken into consideration by the local authority when considering new developments.

- Do we need a Neighbourhood plan to protect us from encroaching development?
- Not necessarily as we are presently protected by “Strategy Nine” of the Local Plan 2019, which states that we are protected by the Green Belt policies.
- However, Green Belt does come up for review so a Neighbourhood Plan may be worth pursuing to give us greater protection.

- What's your plan?
- Have your say.
- We need to prioritise our activities
- So please tell us what is important to you
- Contact us using the form on the website